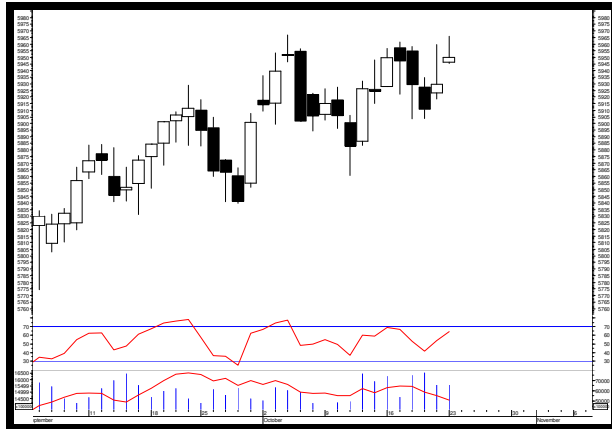


MARKET VIEW

COMPOSITE



Sumber: MetaStock

IHSG berhasil menguat di awal pekan perdagangan kemarin sebesar 0.35% atau 20.48 poin dan ditutup di level 5,950.03. Minat beli asing tercatat mendukung menguatnya IHSG di perdagangan kemarin sebesar Rp.372.24 miliar. Dan dari sekitar 486 saham yang kemarin aktif di perdagangan sekitar 161 saham menguat, 193 saham terkoreksi, dan 132 saham tidak mengalami perubahan. Dan secara keseluruhan pergerakan IHSG di perdagangan hari ini diperkirakan masih akan berfluktuatif dikisaran:

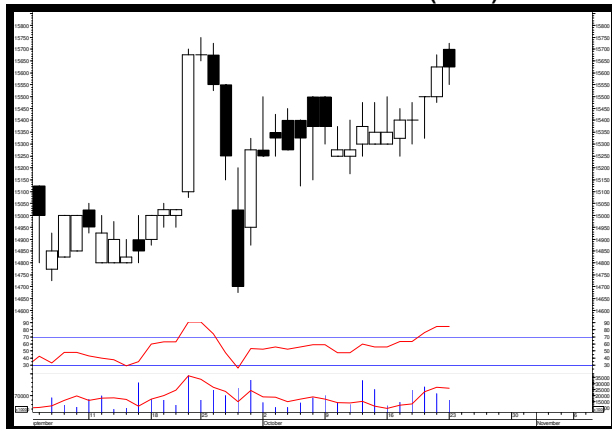
Support : 5,920.91
Resistance : 5,983.30

Close	Point	%Change	52 Weeks Return	Market Caps
5,950.03	20.48	0.35%	10.19%	6,589.07
Active Stock			Trading Volume	Trading Value
Up	Down	Unchange	9.25	6.44
161	193	132		

Sumber: IQPlus

STOCKS ANALYSIS

BANK RAKYAT INDONESIA (BBRI)



Sumber: MetaStock

Rekomendasi: Sell on Strength

Resistance	2	: 15750
	1	: 15725
Support	1	: 15550
	2	: 15475

Saat ini harga telah berada di area jenuh beli (*overbought*). Namun bila harga berhasil menguat dan bertahan di atas level 15675 membuka peluang untuk menguji level 16275 sebagai target sementara.

MEDCO ENERGI INTERNATIONAL (MEDC)



Sumber: MetaStock

Rekomendasi: Buy on Weakness

Resistance	2	: 780
	1	: 770
Support	1	: 750
	2	: 745

Saat ini harga masih berada di area jenuh jual (*oversold*) dengan *support* kuat sementara di level 740.

BANK PEMBANGUNAN JAWA BARAT & BANTEN (BJBR)



Sumber: MetaStock

Rekomendasi: Buy on Weakness

Resistance	2	:	2660
	1	:	2520
Support	1	:	2430
	2	:	2390

Saat ini kondisi harga masih berada di area jenuh jual (*oversold*). Namun selama harga masih bertahan di bawah level 2500 masih berpeluang untuk menguji target koreksi dikisaran level 2300.

BANK PANIN DUBAI SYARIAH (PNBS)



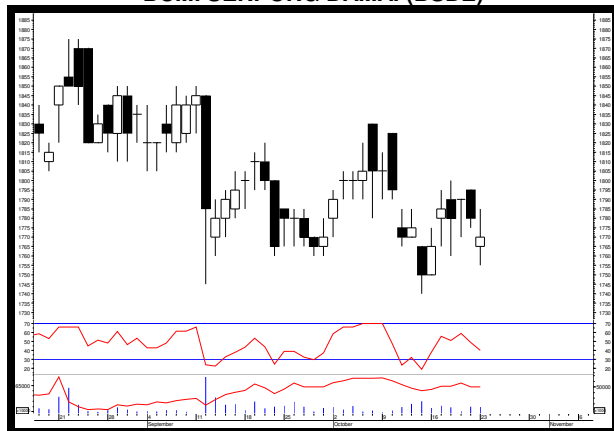
Sumber: MetaStock

Rekomendasi: Buy on Weakness

Resistance	2	:	96
	1	:	95
Support	1	:	93
	2	:	92

Harga telah berada di area jenuh jual (*oversold*) namun selama masih bertahan di bawah level 103 masih berpeluang untuk menguji target koreksi sementara di level 77.

BUMI SERPONG DAMAI (BSDE)



Sumber: MetaStock

Rekomendasi: Trading Buy

Resistance	2	:	1795
	1	:	1785
Support	1	:	1755
	2	:	1750

Trading range saat ini dikisaran level 1750 – 1805. Target sementara dikisaran level 1840 bila harga berhasil menguat dan bertahan di atas level 1805. Namun bila harga melemah dan bertahan di bawah level 1750 membuka peluang untuk menguji level 1715 sebagai target koreksi sementara.

SURYA CITRA MEDIA (SCMA)



Sumber: MetaStock

Rekomendasi: Trading Buy

Resistance	2	:	2170
	1	:	2150
Support	1	:	2110
	2	:	2100

Trading range saat ini masih dikisaran level 2080 – 2300. Target sementara dikisaran level 2520 bila harga berhasil menguat dan bertahan di atas 2300. Namun bila melemah dan bertahan di bawah level 2080 membuka peluang untuk menguji level 2020 – 1935 sebagai target koreksi sementara.

TAMBANG BATUBARA BUKIT ASAM (PTBA)



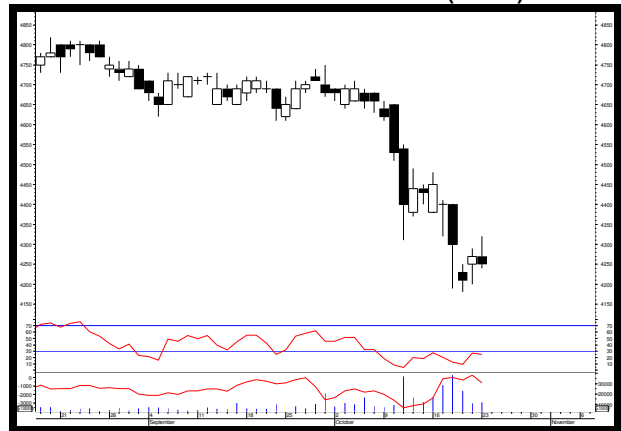
Sumber: MetaStock

Rekomendasi: Trading Buy

Resistance	2	:	11175
	1	:	10950
Support	1	:	10650
	2	:	10600

Selama harga masih bertahan di atas level 10450 masih berpeluang untuk menguji level 11700 – 12175 sebagai target selanjutnya.

TELEKOMUNIKASI INDONESIA (TLKM)



Sumber: MetaStock

Rekomendasi: Buy on Weakness

Resistance	2	:	4380
	1	:	4320
Support	1	:	4240
	2	:	4200

Saat ini harga masih berada di area jenuh jual (*oversold*) dan tren masih menunjukkan arah melemah serta masih berpeluang untuk menguji target koreksi di level 4150 – 3760.

LQ45 TRADING GUIDE

Ticker	Closing	Support	Pivot	Resistance	Trend		Daily Beta	Daily Volatility		
					Daily	Weekly		Last	Average	
AGRICULTURE										
Plantation & Others										
AALI	14,725	14,650	14,725	14,800	Bullish	Bullish	0.94	1.02%	2.86%	
LSIP	1,440	1,420	1,433	1,440	Bullish	Bullish	0.87	1.41%	3.27%	
SSMS	1,470	1,455	1,468	1,480	Bearish	Bearish	0.69	1.72%	3.00%	
MINING										
Coal, Oil & Gas, Metal & Other Resources										
ADRO	1,850	1,830	1,847	1,860	Bearish	Bearish	1.31	1.64%	4.04%	
BUMI	236	214	229	236	Bullish	Bullish	0.80	10.28%	4.78%	
PTBA	10,700	10,650	10,767	10,950	Bearish	Bearish	1.09	2.82%	3.78%	
ANTM	645	645	652	665	Bearish	Bearish	0.95	3.10%	3.80%	
INCO	2,990	2,890	2,957	2,990	Bullish	Bullish	1.28	3.46%	4.20%	
BASIC INDUSTRY										
Cement & Others										
INTP	19,600	19,275	19,517	19,675	Bullish	Bullish	1.32	2.08%	2.74%	
SMGR	10,550	10,400	10,533	10,650	Bearish	Bearish	1.27	2.40%	2.68%	
BRPT	1,995	1,940	1,988	2,030	Bullish	Bullish	0.71	4.64%	4.59%	
MISC.INDUSTRY										
Otomotif & Manufacturing of Garments										
ASII	8,050	8,000	8,067	8,150	Bullish	Bearish	1.35	1.88%	2.57%	
SRIL	384	384	386	390	Bearish	Bearish	1.04	1.56%	5.01%	
CONSUMER GOODS										
Foods, Cigarette, Pharmacy & Others										
ICBP	8850	8650	8800	8900	Bearish	Bearish	0.99	2.89%	2.50%	
INDF	8,350	8,250	8,333	8,400	Bullish	Bullish	1.32	1.82%	2.58%	
UNVR	49,150	49,100	49,333	49,750	Bearish	Bearish	1.06	1.32%	2.04%	
HMSP	3,930	3,870	3,917	3,950	Bullish	Bullish	0.86	2.07%	2.26%	
GGRM	62,775	62,675	62,900	63,250	Bearish	Bearish	1.14	0.92%	2.60%	
KLBF	1,685	1,675	1,693	1,720	Bearish	Bearish	1.15	2.69%	2.58%	
PROPERTY & CONSTRUCTIONS										
BSDE	1,770	1,755	1,770	1,785	Bearish	Bearish	1.45	1.71%	2.96%	
LPKR	710	710	717	730	Bullish	Bearish	0.96	2.82%	3.37%	
PPRO	204	204	205	208	Bullish	Bullish	1.10	1.96%	4.50%	
PWON	635	620	630	635	Bullish	Bullish	1.39	2.42%	3.62%	
SMRA	1,045	1,040	1,055	1,080	Bullish	Bullish	1.47	3.85%	3.62%	
ADHI	2,160	2,150	2,173	2,210	Bullish	Bullish	1.19	2.79%	3.27%	
PTPP	2,850	2,820	2,847	2,870	Bullish	Bullish	1.01	1.77%	2.83%	
WIKA	1,990	1,905	1,965	2,000	Bullish	Bullish	1.16	4.99%	2.93%	
WSKT	2,160	2,130	2,170	2,220	Bullish	Bullish	0.99	4.23%	2.77%	
INFRASTRUCTURE										
Energy, Telecommunication, Transportation & Highway, Non Building Construction										
PGAS	1,745	1,700	1,732	1,750	Bullish	Bullish	1.28	2.94%	3.29%	
JSMR	5,950	5,950	6,025	6,175	Bearish	Bearish	1.11	3.78%	2.53%	
EXCL	3,400	3,370	3,400	3,430	Bullish	Bearish	1.12	1.78%	3.83%	
TLKM	4,250	4,240	4,270	4,320	Bullish	Bearish	1.06	1.89%	2.00%	
FINANCE										
Bank & Other Financing										
BBCA	21,000	20,650	21,008	21,375	Bullish	Bullish	1.00	3.51%	1.81%	
BBNI	7,550	7,550	7,600	7,700	Bearish	Bearish	1.26	1.99%	2.53%	
BBRI	15,625	15,550	15,633	15,725	Bullish	Bullish	1.37	1.13%	2.21%	
BBTN	3,060	3,040	3,070	3,110	Bearish	Bearish	1.06	2.30%	2.89%	
BJBR	2,430	2,430	2,460	2,520	Bearish	Bearish	1.11	3.70%	4.18%	
BMRI	6,950	6,900	6,983	7,100	Bearish	Bearish	1.32	2.90%	2.24%	
TRADE & SERVICE										
Investment Company & Wholesale										
AKRA	7,450	7,350	7,433	7,500	Bullish	Bullish	0.80	2.04%	3.07%	
UNTR	32,150	32,150	32,542	33,325	Bearish	Bearish	1.27	3.65%	3.23%	
LPPF	9,500	9,325	9,450	9,525	Bearish	Bearish	1.24	2.14%	3.28%	
BMTR	620	590	610	620	Bullish	Bullish	1.09	5.08%	4.37%	
MNCN	1,510	1,495	1,517	1,545	Bearish	Bullish	1.34	3.34%	3.90%	
SCMA	2,140	2,110	2,133	2,150	Bullish	Bearish	1.25	1.90%	3.54%	
MYRX	119	117	120	123	Bearish	Bearish	0.71	5.13%	3.29%	

Sumber: Lautandhana Secuirindo

Note:

1. Bila harga OPEN pada perdagangan hari ini lebih besar (kecil) daripada nilai PIVOT, maka terdapat kemungkinan saham tersebut akan berpotensi menguat (melemah) pada perdagangan hari ini.
2. Beta diatas 1 ($b > 1$) mengindikasikan adanya kemungkinan saham tersebut bergerak melebihi pergerakan pasar. (jika kondisi pasar (IHSG) dalam keadaan *bullish* (*bearish*) maka saham tersebut kemungkinan akan naik (turun) melebihi kenaikan (penurunan) pasar)
3. Bila trend daily dan weekly menunjukkan bullish (bearish), maka besar kemungkinan saham tersebut akan menguat (melemah)
4. *Daily Volatility* merupakan historis dari keuntungan maksimum maupun kerugian maksimum yang dapat diterima investor dalam 1 hari perdagangan. (**Last**: historis volatilitas pada perdagangan kemarin, **Average**: rata-rata volatilitas per hari selama 1 tahun perdagangan)



Wisma Keia 15th floor
Jl. Jendral Sudirman Kav. 3
Jakarta 10220
T +62 21 5785 1818
F +62 21 5785 1637

EQUITY DIVISION

Jakarta Branch Pluit

Kawasan CBD Pluit Blok A No.20
Jl. Pluit Selatan Raya No.1
Jakarta Utara 14440
T +6221 6667 5345
F +6221 6667 5234

Kelapa Gading

Sentra Bisnis Artha Gading
Jl. Boulevard Artha Gading Blok A6B Kav.7
Kelapa Gading Barat
Jakarta Utara 14240
T +6221 4585 6402
F +6221 4587 3961

Puri

Rukan Grand Taman Aries Niaga Blok G1 No.11
Jl. Taman Aries Kembangan
Jakarta Barat 11620
T +6221 2931 9515
F +6221 2931 9516

Others Branch Bandung

Komplek Paskal Hypersquare
Blok C No. 15, Kebon Jeruk
Bandung 40181
T +6222 8606 1027
F +6222 8606 0684

Medan

Jl. Cut Mutia No.15B
Medan 20152
T +6261 451 8855
F +6261 455 1833

Surabaya Branch

Ruko Permata Bintoro
Jl. Ketampon Kav.1-2
Surabaya
T +6231 562 2555
F +6231 567 1398

DISCLAIMER

This report has been prepared by PT. Lotus Sekuritas on behalf of itself and its affiliated companies and is provided for information purposes only. Under no circumstances is it to be used or considered as an offer to sell, or a solicitation of any offer to buy. This report has been produced independently and the forecasts, opinions and expectations contained herein are entirely those of PT. Lotus Sekuritas.

While all reasonable care has been taken to ensure that information contained herein is not untrue or misleading at the time of publication, PT. Lotus Sekuritas makes no representation as to its accuracy or completeness and it should not be relied upon as such. This report is provided solely for the information of clients of PT. Lotus Sekuritas who are expected to make their own investment decisions without reliance on this report. Neither PT. Lotus Sekuritas nor any officer or employee of PT. Lotus Sekuritas accept any liability whatsoever for any direct or consequential loss arising from any use of this report or its contents. PT. Lotus Sekuritas and/or person connected with it may have acted upon or used the information herein contained, or the research or analysis on which it is based, before publication.